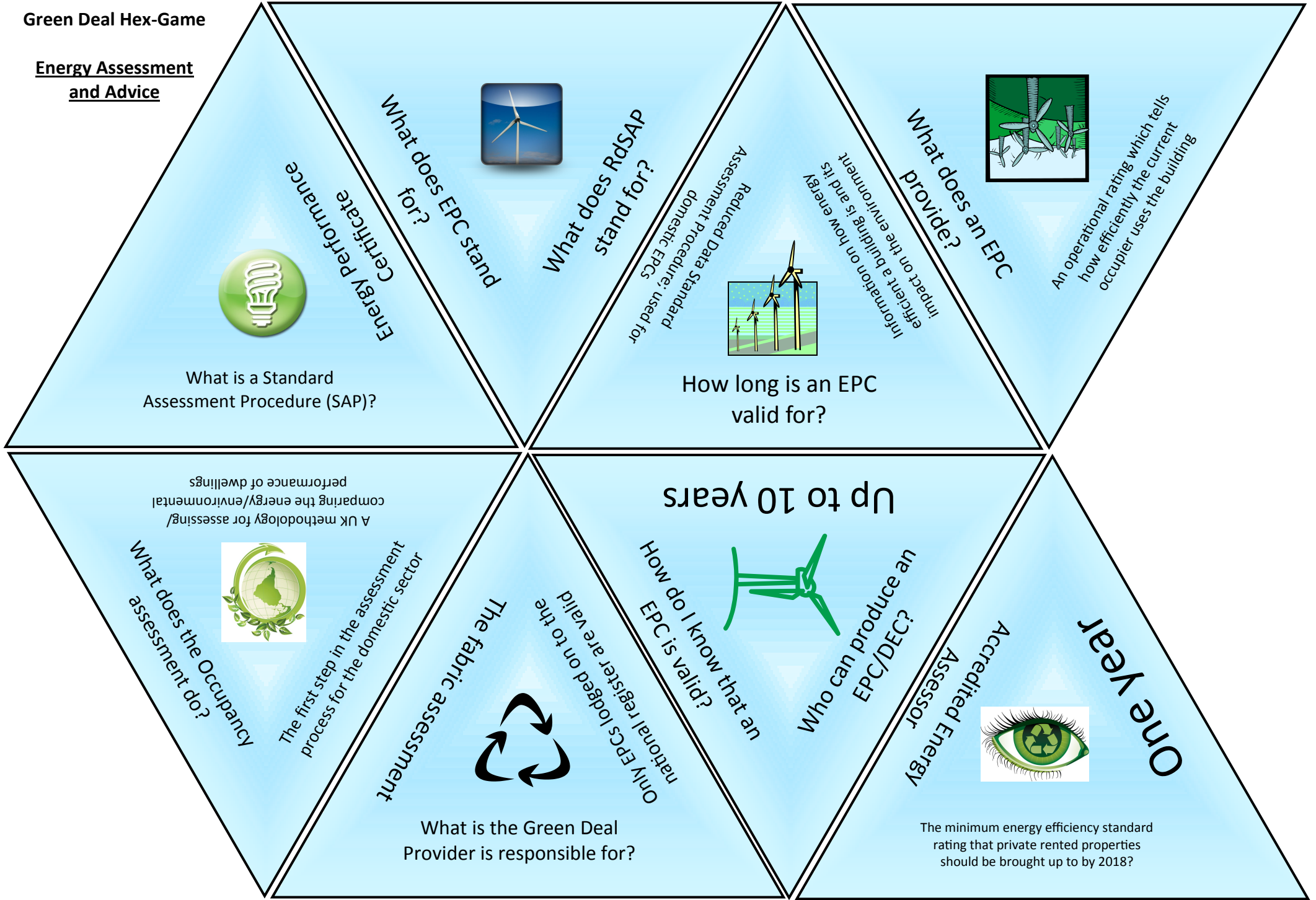


Green Deal Hex-Game

Energy Assessment and Advice



What is a Standard Assessment Procedure (SAP)?



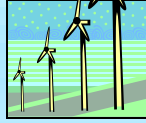
Energy Performance Certificate

What does EPC stand for?



What does RdSAP stand for?

Reduced Data Standard Assessment Procedure; used for domestic EPCs



How long is an EPC valid for?

Up to 10 years

What does the Occupancy Assessment do?



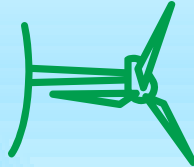
A UK methodology for assessing/comparing the energy/environmental performance of dwellings

The first step in the assessment process for the domestic sector



What is the Green Deal Provider is responsible for?

How do I know that an EPC is valid?



Who can produce an EPC/DEC?

Accredited Energy Assessor



The minimum energy efficiency standard rating that private rented properties should be brought up to by 2018?

One Year

Green Deal Hex-Game

Energy Assessment
and Advice

Energy Company
Obligation



Who can install energy efficiency improvements under the Green Deal?

Focus on vulnerable/
low-income households

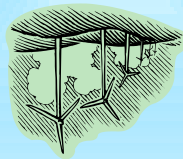
What role will ECO play
in the Green Deal?



A key advantage of the Green Deal for the building occupants?

The provision of finance and arranging the energy efficiency works

Improved thermal
comfort levels



The second step in the Green Deal assessment process for the domestic sector

Lower environmental
impact

A key benefit of an external refurbishment over demolishing/rebuilding



Is the Green Deal competing against the Feed-in-Tariff and the RHI schemes?

“E”

Authorised Green
Deal installer



There will be financial penalties if the property does not reach.....

an EPC ‘E’ rating



Building Research
Establishment

What does BRE stand
for?



Occupancy
Assessment

Why are the Green Deal measures called ‘non-portable’?

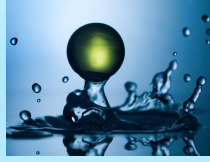
Measures cannot be transferred to other properties



It is an improvement made to a property

Green Deal Hex-Game

**Energy Assessment
and Advice**



One of the main elements that affect energy use in the household

Provides information about the way the current household uses the property

How long is a DEC valid for?



They are legally required for any domestic building that is for sale/rental

What is PAS (Publicly Available Specification) 2030?

A standard for improving the energy efficiency of existing buildings



What is a Building Energy Management System (BEMS)?

DEC (Display Energy Certificate)



When is an EPC necessary?

Number of occupants



What is ECO?

Works with others



What will the Local Authorities' role be in the Green Deal?

Reduce, Improve, Install

Delivering the Green Deal directly or in partnership

What is a 'Green Deal' Measure?



What is the best approach to energy efficiency?



A computer-based equipment control system